



Model(s) ZER6000AV-TM

Top Mount Exposed Sensor Flush Valves for Water Closets With Ceramic Gears and AquaVantage® Diaphragms

TAG

Architectural/Engineering Specification:

The ZER EZ Gear-Driven Water Closet Flush Valve is performance engineered with the dual action of the ceramic disc cartridge and motor gear-driven operation. Its polished chrome-plated finish, modern top-mount design, and quiet diaphragm operation are ideal for new and retrofit commercial restroom applications.

PRODUCT FEATURES:

- Zurn's TPE diaphragm Clog-resistant bypass Chloramine resistant
- Actuator Electronic automatic sensor Gear-driven ceramic cartridge
- True Mechanical Override Button
- Control Stop Internal siphon-guard protection Vandal-resistant stop cap Sweat solder kit Cast wall flange with set screw
- Vacuum Breaker High back pressure One piece hex coupling nut
- Chloramine-resistant internal seals
- Adjustable tailpiece
- Battery Powered (6 AA included)
- Spud coupling and flange for top spud connection
- Operating Pressure 25 psi (running) - 80 psi (static) Higher running pressure may be required for some fixtures. Consult fixture manufacturer for details.

VALVE HEIGHT OPTIONS:

| | Vacuum Tube Length | Rough-in Height "A" |
|----------|--------------------|---------------------|
| Standard | 8-1/2" [216"] | 11-1/2" [292] |
| -1 | 13" [330] | 16" [406] |

FLOW OPTIONS:

| | Flush Volume | Dual Flush | *WaterSense Labeled |
|--------|--------------|--------------|---------------------|
| -ONE** | 1.1 gpf | | x |
| -HET** | 1.28 gpf | 1.28/1.1 gpf | x |
| -WS1** | 1.6 gpf | 1.6/1.1 gpf | |

** Not available with triple filter by-pass

SUFFIX OPTIONS:

| | |
|-----|------------------------------|
| -DF | Dual Flush (See Chart Above) |
| -YJ | Split Ring Pipe Support |
| -YK | Solid Ring Pipe Support |



Product Compliance:

ADA
ASSE 1037/ASME A112.1037/CSA B125.37
ASSE 1037
CSA B125.37
IPC
WaterSense

*Complies with ADA & ICC A117.1 accessibility requirements when installed according to the requirements outlined in these standards.



*This product should be used with a WaterSense labeled counterpart with a compatible flow volume to ensure that the entire system meets the requirements for water efficiency and performance.

**Although products with certain combinations of options and features will meet or comply with these standards and/or certifications, not every combination of options and features will result in such compliance. If you have any questions about your particular product, please contact our Customer Care Dept. at 1-855-ONE-ZURN (United States) or 1-877-892-5216 (Canada) for confirmation.*

[Installation Guide - FV838.pdf](#)

Architectural/Engineering Approval

Design and dimensional data (inches and [mm]) are subject to manufacturing tolerances and change without notice.

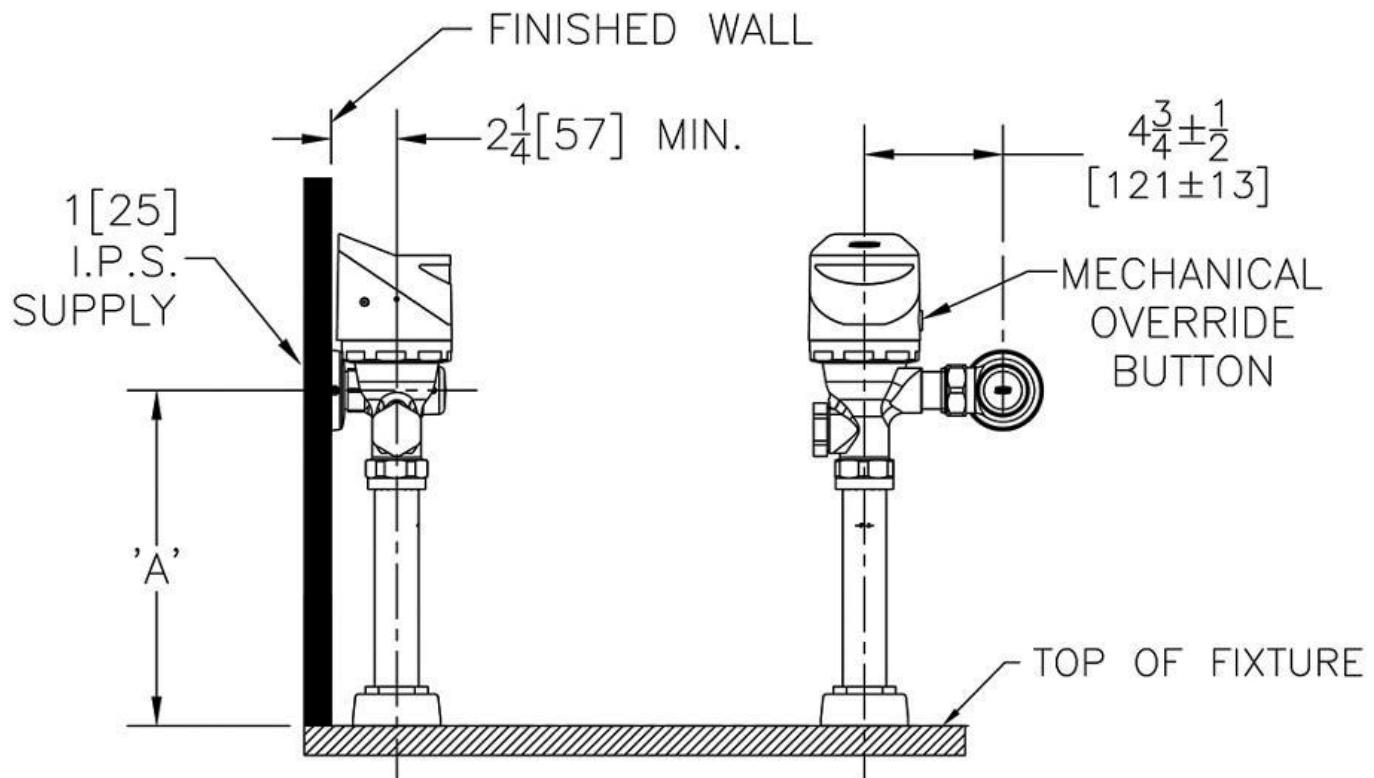
⚠ WARNING: Cancer and Reproductive Harm – www.P65warnings.ca.gov
⚠ ADVERTENCIA: Cáncer y daño reproductivo – www.P65warnings.ca.gov
⚠ AVERTISSEMENT: Cancer et effets néfastes sur la reproduction – www.P65warnings.ca.gov



Model(s) ZER6000AV-TM

Top Mount Exposed Sensor Flush Valves for Water Closets With Ceramic Gears and AquaVantage® Diaphragms

TAG _____



NOTE: All dimensions are for reference only. Do not use for pre-plumbing.

Design and dimensional data (inches and [mm]) are subject to manufacturing tolerances and change without notice.

⚠ WARNING: Cancer and Reproductive Harm – www.P65warnings.ca.gov
⚠ ADVERTENCIA: Cáncer y daño reproductivo – www.P65warnings.ca.gov
⚠ AVERTISSEMENT: Cancer et effets néfastes sur la reproduction – www.P65warnings.ca.gov