



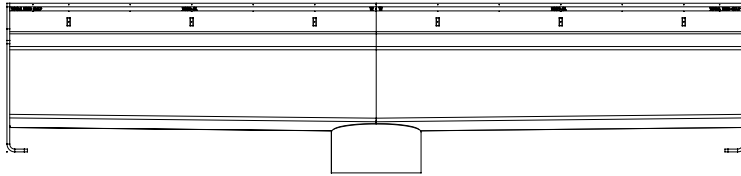
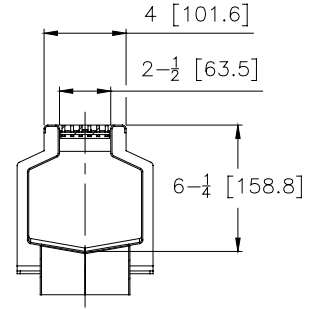
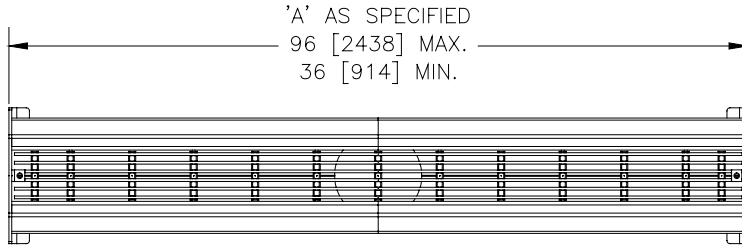
Z899-SL

4" [101.6] WIDE REVEAL ELEVATOR SLOT DRAIN

SPECIFICATION SHEET

TAG _____

Design and Dimensional Data (inches and [mm]) are Subject to Manufacturing Tolerances and Change Without Notice



ENGINEERING SPECIFICATION: ZURN Z899-SL

Zurn Z899-SL elevator slot drain, stainless steel channel made of #16 gauge fabricated stainless steel conforming to ASTM A-240 (type 304) with center outlet, leveling feet, and bead blasted finish. Slotted elevator drain is designed to comply with SFFC Code, Section 511.1 for 100 GPM flow rate. Standard grate to be stainless steel wire grate conforming to ASTM A-240 (type 304), meets ADA requirements, has an open area 18.51in²/ linear foot [391.80 cm²/ linear meter], and is designed to comply with Class A per DIN EN1433 load classification, in addition to being tested to 2500 lbs per ASME A112.6.3.

Selection	Product Length In.[mm]	Open Area Sq.In. [cm ²]
_____	36 [914]	55.5 [358.3]
_____	42 [1066.8]	64.8 [418.0]
_____	48 [1219]	74.1 [477.7]
_____	60 [1524]	92.5 [597.1]
_____	72 [1829]	111.1 [716.5]
_____	96 [2438]	148.1 [955.4]

OPTIONS (Check/specify appropriate options)

(Specify size/type) **OUTLET**

_____ 4NH 4" No-Hub Outlet

Prefix Options (Check/specify appropriate options)

_____ Z Type 304 Stainless steel*

_____ ZM Type 316 Stainless steel

Suffix Options (Check/specify appropriate options)

_____ P 1/2 [13] Trap Primer Connection

* Regularly furnished unless otherwise specified

⚠ WARNING: Cancer and Reproductive Harm - www.P65Warnings.ca.gov

⚠ ADVERTENCIA: Cáncer y daño reproductivo - www.P65Warnings.ca.gov

⚠ AVERTISSEMENT: Cancer et effets néfastes sur la reproduction - www.P65Warnings.ca.gov

Zurn Industries, LLC | Specification Drainage Operation
1801 Pittsburgh Avenue, Erie, PA 16502, Ph. 855.663.9876

In Canada | Zurn Industries Limited
7900 Goreway Drive, Unit 10, Brampton, Ontario L6T 5W6, Ph. 877.892.5216

www.zurn.com

Rev.	-
Date:	02/17/26
C.N. No.	147522
Patent	zurn.com/patents
Prod. Dwg. No.	Z899-SL