



## Model(s) Z812A1-XL

AquaSpec® centerset 3-1/2" gooseneck faucet with lever handles (Lead Free)

TAG \_\_\_\_\_

### Architectural/Engineering Specification:

Polished chrome-plated cast brass faucet body with integral shanks, quarter turn ceramic disc cartridges and a 3-1/2" [89mm] centerline rigid or swing gooseneck spout. Unit is furnished with a 2.2 GPM [8.3 L] pressure compensating aerator (complying with ANSI

A112.18.1 Standard for flow), 2-1/2" [64mm] vandal-resistant color-coded metal lever handles, mounting hardware and 1/2" NPSM coupling nuts for standard lavatory risers. Zurn Lead Free products (-XL) is the line of durable, high quality brass faucets and fixtures that are designed and manufactured to comply with Section 1417 of the Safe Drinking Water Act (SDWA) which mandates the weighted average lead content of no more than 0.25% of the wetted surface.

### PRODUCT FEATURES:

- Ceramic Disc Cartridge
- Chrome-plated Cast Brass Body
- 2-1/2" Vandal Resistant color coded metal lever handles

### SUFFIX OPTIONS:

<input type="checkbox"/> -140	140 degree Restricted Swing Gooseneck Spout
<input type="checkbox"/> -G	1-1/4" [32mm] Grid Strainer Drain
<input type="checkbox"/> -P	1-1/4" [32mm] Pop-up Drain

### AERATOR OPTIONS:

	Suffix	Flowrate GPM [L]	Vandal-Resistant	WaterSense* Labeled	Pressure Compensating	Outlet Type
<input type="checkbox"/>	-17F	1.5 GPM [5.7L]	x	x	x	Aerator
<input type="checkbox"/>	-18F	1.5 GPM [5.7L]	x	x	x	Laminar
<input type="checkbox"/>	-FC1.5	1.5 GPM [5.7L]		x	x	
<input type="checkbox"/>	-FC1.0	1.0 GPM [3.8L]		x	x	
<input type="checkbox"/>	-7F	1.0 GPM [3.8L]		x	x	Spray
<input type="checkbox"/>	-16F	1.0 GPM [3.8L]	x		x	Spray
<input type="checkbox"/>	-22F	1.0 GPM [3.8L]	x			Laminar
<input type="checkbox"/>	-25F	0.35 GPM [1.3L]	x		x	Spray
<input type="checkbox"/>	-28F	0.5 GPM [1.9L]	x			Laminar
<input type="checkbox"/>	-2F	2.2 GPM [8.3L]	x			Aerator
<input type="checkbox"/>	-3F	0.5 GPM [1.9L]	x			Spray
<input type="checkbox"/>	-4F	2.2 GPM [8.3L]	x			Laminar
<input type="checkbox"/>	-FC2.0	2.0 GPM [7.6L]			x	
<input type="checkbox"/>	-FC0.5	0.5 GPM [1.9L]			x	
<input type="checkbox"/>	-27F	0.5 GPM [1.9L]				Laminar



### Product Compliance:

ADA  
ASME A112.18.1/CSA B125.1  
CEC  
IPC  
NSF 61  
NSF 372  
WaterSense

\*Complies with ADA & ICC A117.1 accessibility requirements when installed according to the requirements outlined in these standards.



\*This product should be used with a WaterSense labeled counterpart with a compatible flow volume to ensure that the entire system meets the requirements for water efficiency and performance.

*\*Although products with certain combinations of options and features will meet or comply with these standards and/or certifications, not every combination of options and features will result in such compliance. If you have any questions about your particular product, please contact our Customer Care Dept. at 1-855-ONE-ZURN (United States) or 1-877-892-5216 (Canada) for confirmation.*

[Installation Guide - CF1170.pdf](#)

Architectural/Engineering Approval

Design and dimensional data (inches and [mm]) are subject to manufacturing tolerances and change without notice.

⚠ WARNING: Cancer and Reproductive Harm – [www.P65warnings.ca.gov](http://www.P65warnings.ca.gov)

⚠ ADVERTENCIA: Cáncer y daño reproductivo – [www.P65warnings.ca.gov](http://www.P65warnings.ca.gov)

⚠ AVERTISSEMENT: Cancer et effets néfastes sur la reproduction – [www.P65warnings.ca.gov](http://www.P65warnings.ca.gov)

by Zurn Elkay Water Solutions

[ZURN.COM](http://ZURN.COM)

Patent [zurn.com/patents](http://zurn.com/patents)

© 2025 Page 1

5900 Elwin Buchanan Drive, Sanford, NC 27330

US 1.855.ONE.ZURN [Sensor.Products@zurn.com](mailto:Sensor.Products@zurn.com)

3544 Nashua Drive, Mississauga, Ontario L4V1L2

CANADA 1.877.892.5216 [Sensor.Products@zurn.com](mailto:Sensor.Products@zurn.com)

[Z812A1-XL](#)

[Z812A1-XL\\_spec.pdf](#)

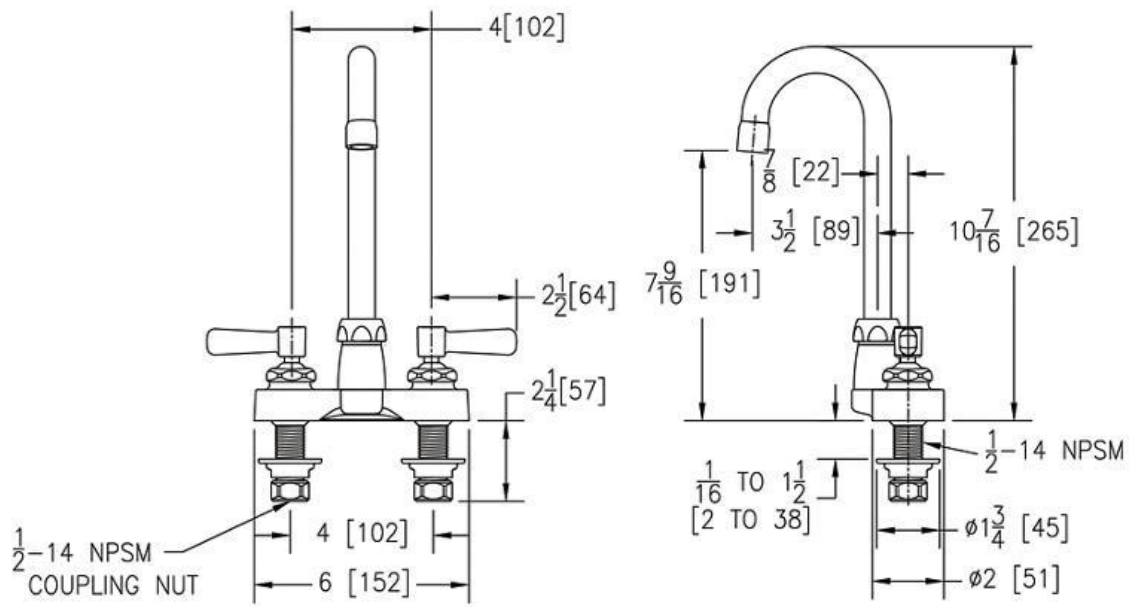
REV 10/8/2025



## Model(s) Z812A1-XL

AquaSpec® centerset 3-1/2" gooseneck faucet with lever handles (Lead Free)

TAG \_\_\_\_\_



NOTE: All dimensions are for reference only. Do not use for pre-plumbing.

Design and dimensional data (inches and [mm]) are subject to manufacturing tolerances and change without notice.

⚠ WARNING: Cancer and Reproductive Harm – [www.P65warnings.ca.gov](http://www.P65warnings.ca.gov)  
⚠ ADVERTENCIA: Cáncer y daño reproductivo – [www.P65warnings.ca.gov](http://www.P65warnings.ca.gov)  
⚠ AVERTISSEMENT: Cancer et effets néfastes sur la reproduction – [www.P65warnings.ca.gov](http://www.P65warnings.ca.gov)