



Model(s) Z7302-SS-MT-DV2P-HW-H7-S8

Temp-Gard® III Tub and Shower Unit

TAG

Architectural/Engineering Specification:

Single handle pressure balancing mixing tub and shower unit, ceramic control cartridge with stainless steel balancing piston, built in reverse connection capability (To reverse the hot and cold inlets simply remove cartridge and turn 180 degrees), two service stops / check stops, and adjustable limit stop. When valve is turned on it must rotate from cold through to the hot position. All exposed trim and handle are metal with polished nickel chrome plated surface. The valve is supplied with a two-way brass diverter valve, 60" flexible metal hose, 24" mounting bar, supply elbow and flange, -H7 water saver 2.0 GPM hand held shower head, -S8 water saver 1.75 GPM shower head, arm, flange, and (T2) diverter tub spout with chrome plated finish. The valve body is a four port valve with a tub port plug included for shower only applications. The valve inlets, shower and tub outlet are all standard with 1/2" NPT female thread connections.

PRODUCT FEATURES:

- Single handle pressure balancing mixing tub and shower unit
- Two-way brass diverter valve, 60" flexible metal hose, 24" mounting bar, supply elbow and flange, -H7 water saver 2.0 GPM hand-held shower head
- -S8 water saver 1.75 GPM shower head, arm, flange, and (T2) diverter tub spout with chrome-plated finish
- Four-port valve body with a tub port plug included for shower only applications

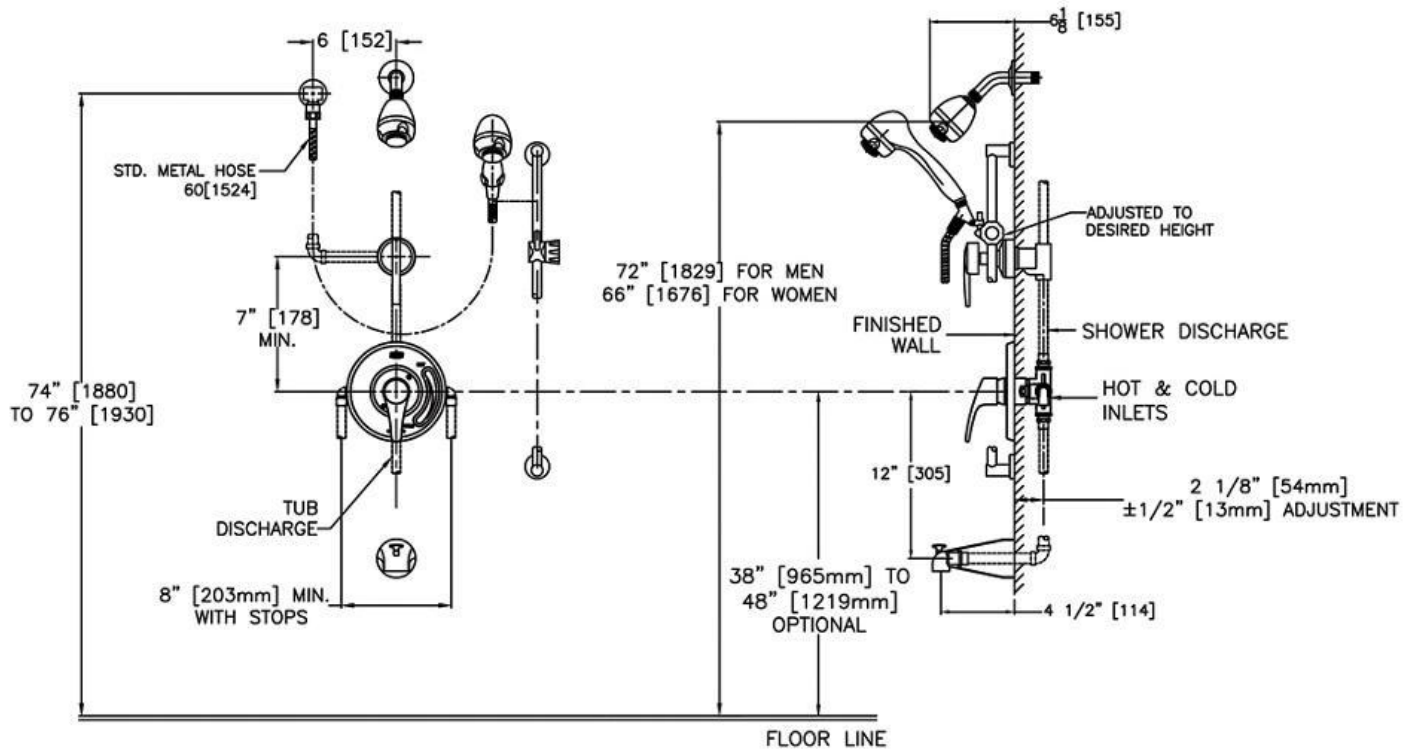


**Although products with certain combinations of options and features will meet or comply with these standards and/or certifications, not every combination of options and features will result in such compliance. If you have any questions about your particular product, please contact our Customer Care Dept. at 1-855-ONE-ZURN (United States) or 1-877-892-5216 (Canada) for confirmation.*

Architectural/Engineering Approval

Design and dimensional data (inches and [mm]) are subject to manufacturing tolerances and change without notice.

⚠ WARNING: Cancer and Reproductive Harm – www.P65warnings.ca.gov
⚠ ADVERTENCIA: Cáncer y daño reproductivo – www.P65warnings.ca.gov
⚠ AVERTISSEMENT: Cancer et effets néfastes sur la reproduction – www.P65warnings.ca.gov



NOTE: All dimensions are for reference only. Do not use for pre-plumbing.

Design and dimensional data (inches and [mm]) are subject to manufacturing tolerances and change without notice.

⚠ WARNING: Cancer and Reproductive Harm – www.P65warnings.ca.gov
 ⚠ ADVERTENCIA: Cáncer y daño reproductivo – www.P65warnings.ca.gov
 ⚠ AVERTISSEMENT: Cancer et effets néfastes sur la reproduction – www.P65warnings.ca.gov