



Model(s) Z7221-SS-LH Temp-Gard® Tub and Shower Unit

TAG _____

Architectural/Engineering Specification:

Single handle pressure balancing mixing tub and shower unit with diverter/volume control, with single bronze stem, stainless steel balancing piston integral with stem assembly, metal lever handle, integral service stops, and brass adjustment limit stop screw in cap. Complete with double seal packing, adjustable brass packing nut, and removable brass seats; all exposed trim with polished nickel chrome plated surface. Valve supplied with standard shower head, arm, flange and tub spout. The valve hot and cold inlets and shower outlet are 1/2" female copper sweat, the tub outlet is 1/2" NPT connections.

PRODUCT FEATURES:

- Single handle pressure balancing mixing tub and shower unit with diverter/volume control
- 2.5 gpm standard shower head, arm, flange and tub spout



Product Compliance:

ADA
ASSE 1016/ASME A112.1016/CSA B125.16
ASSE 1016
CSA B125.16

*Complies with ADA & ICC A117.1 accessibility requirements when installed according to the requirements outlined in these standards.

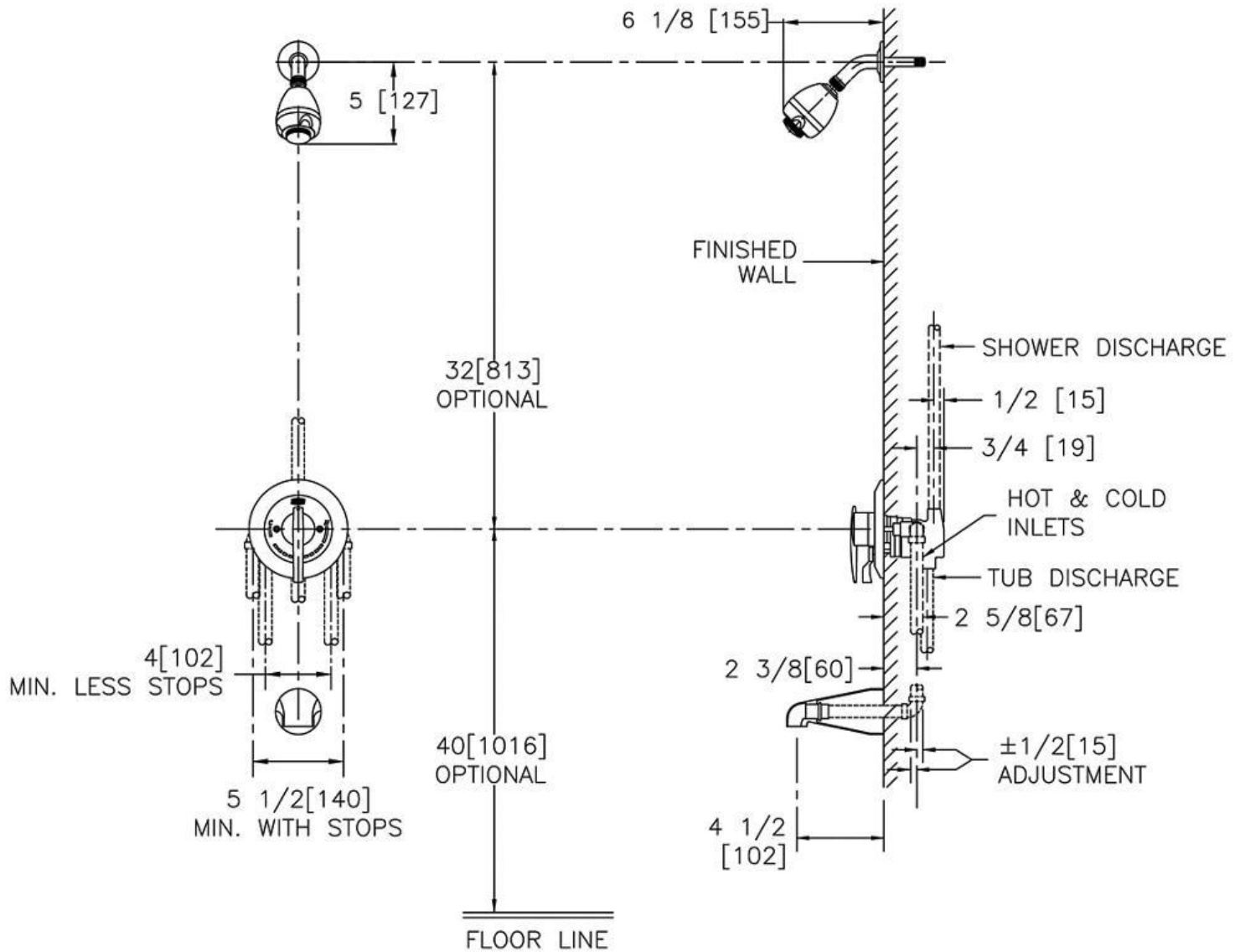
**Although products with certain combinations of options and features will meet or comply with these standards and/or certifications, not every combination of options and features will result in such compliance. If you have any questions about your particular product, please contact our Customer Care Dept. at 1-855-ONE-ZURN (United States) or 1-877-892-5216 (Canada) for confirmation.*

[Installation Guide - cf1007.pdf](#)

Architectural/Engineering Approval

Design and dimensional data (inches and [mm]) are subject to manufacturing tolerances and change without notice.

⚠ WARNING: Cancer and Reproductive Harm – www.P65warnings.ca.gov
⚠ ADVERTENCIA: Cáncer y daño reproductivo – www.P65warnings.ca.gov
⚠ AVERTISSEMENT: Cancer et effets néfastes sur la reproduction – www.P65warnings.ca.gov



NOTE: All dimensions are for reference only. Do not use for pre-plumbing.

Design and dimensional data (inches and [mm]) are subject to manufacturing tolerances and change without notice.

⚠ WARNING: Cancer and Reproductive Harm – www.P65warnings.ca.gov

⚠ ADVERTENCIA: Cáncer y daño reproductivo – www.P65warnings.ca.gov

⚠ AVERTISSEMENT: Cancer et effets néfastes sur la reproduction – www.P65warnings.ca.gov