



Model(s) Z6950-XL-IM-S

Aqua-FIT® Battery Powered Faucet with Integral Mixer

TAG _____

Architectural/Engineering Specification:

Zurn Aqua-Fit® faucets are ideal for high-use applications where durability and hands-free operation are necessary. ADA compliant, battery powered, polished chrome-plated cast brass sensor faucet with infrared proximity sensor for retrofit and new construction.

Zurn Lead Free products (-XL) is the line of durable, high quality brass faucets and fixtures that are designed and manufactured to comply with Section 1417 of the Safe Drinking Water Act (SDWA) which mandates the weighted average lead content of no more than 0.25% of the wetted surface.

PRODUCT FEATURES:

- Above Deck Integral Mixer
- Line Purge Mode (adjustable)
- Metering Mode (adjustable)
- 30 second Time Out Feature (adjustable)
- Infrared Convergence-Type Proximity Sensor
- Standard Chrome-plated Cast Brass Body
- In-line Filter
- Inlet for 1/2" Ball Riser

SUFFIX OPTIONS:

-CP4	Cover Plate 4" [102mm] Centers
-CP8	Cover Plate 8" [203mm] Centers

POWER OPTIONS:

Power Supply Option	
-ACA	6-VDC plug-in power converter
-CWB	Connector wire for plug-in power converter
Power Supply Accessories (Sold Separately)	
-HW6	Hardwired power converter
-MJ	Mini junction box

AERATOR OPTIONS:

Suffix	Flowrate GPM [L]	Vandal-Resistant	WaterSense* Labeled	Outlet Type
-E	1.5 GPM [5.7L]	x	x	Aerator
-F	0.5 GPM [1.9L]	x		Spray
-J	1.5 GPM [5.7L]	x	x	Laminar
-K	1.0 GPM [3.8L]	x	x	Laminar
-L	1.0 GPM [3.8L]	x	x	Aerator
-M	0.35 GPM [1.3L]	x		Spray
-N	0.5 GPM [1.9L]	x		Laminar



Product Compliance:

ADA
ASME A112.18.1/CSA B125.1, A112.18.1
CEC
CSA B125.1
IPC
NSF 61
NSF 372
WaterSense

*Complies with ADA & ICC A117.1 accessibility requirements when installed according to the requirements outlined in these standards.



*This product should be used with a WaterSense labeled counterpart with a compatible flow volume to ensure that the entire system meets the requirements for water efficiency and performance.

*Although products with certain combinations of options and features will meet or comply with these standards and/or certifications, not every combination of options and features will result in such compliance. If you have any questions about your particular product, please contact our Customer Care Dept. at 1-855-ONE-ZURN (United States) or 1-877-892-5216 (Canada) for confirmation.

[Installation Guide - Z6950_installation.pdf](#)

Architectural/Engineering Approval

Design and dimensional data (inches and [mm]) are subject to manufacturing tolerances and change without notice.

⚠ WARNING: Cancer and Reproductive Harm – www.P65warnings.ca.gov

⚠ ADVERTENCIA: Cáncer y daño reproductivo – www.P65warnings.ca.gov

⚠ AVERTISSEMENT: Cancer et effets néfastes sur la reproduction – www.P65warnings.ca.gov

by Zurn Elkay Water Solutions

ZURN.COM

Patent zurn.com/patents

© 2025 Page 1

5900 Elwin Buchanan Drive, Sanford, NC 27330
US 1.855.ONE.ZURN Sensor.Products@zurn.com
3544 Nashua Drive, Mississauga, Ontario L4V1L2
CANADA 1.877.892.5216 Sensor.Products@zurn.com

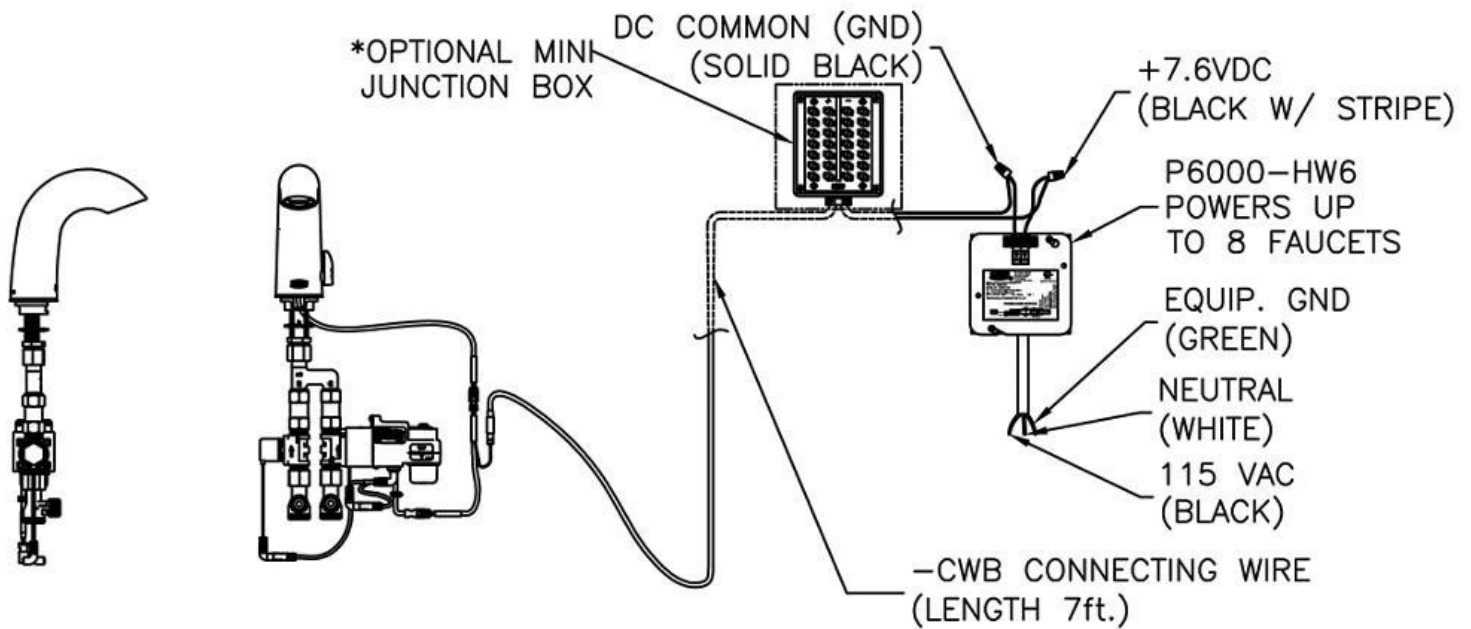
[Z6950-XL-IM-S](#)
[Z6950-XL-IM-S_spec.pdf](#)
REV 10/24/2025



Model(s) Z6950-XL-IM-S

Aqua-FIT® Battery Powered Faucet with Integral Mixer

TAG _____

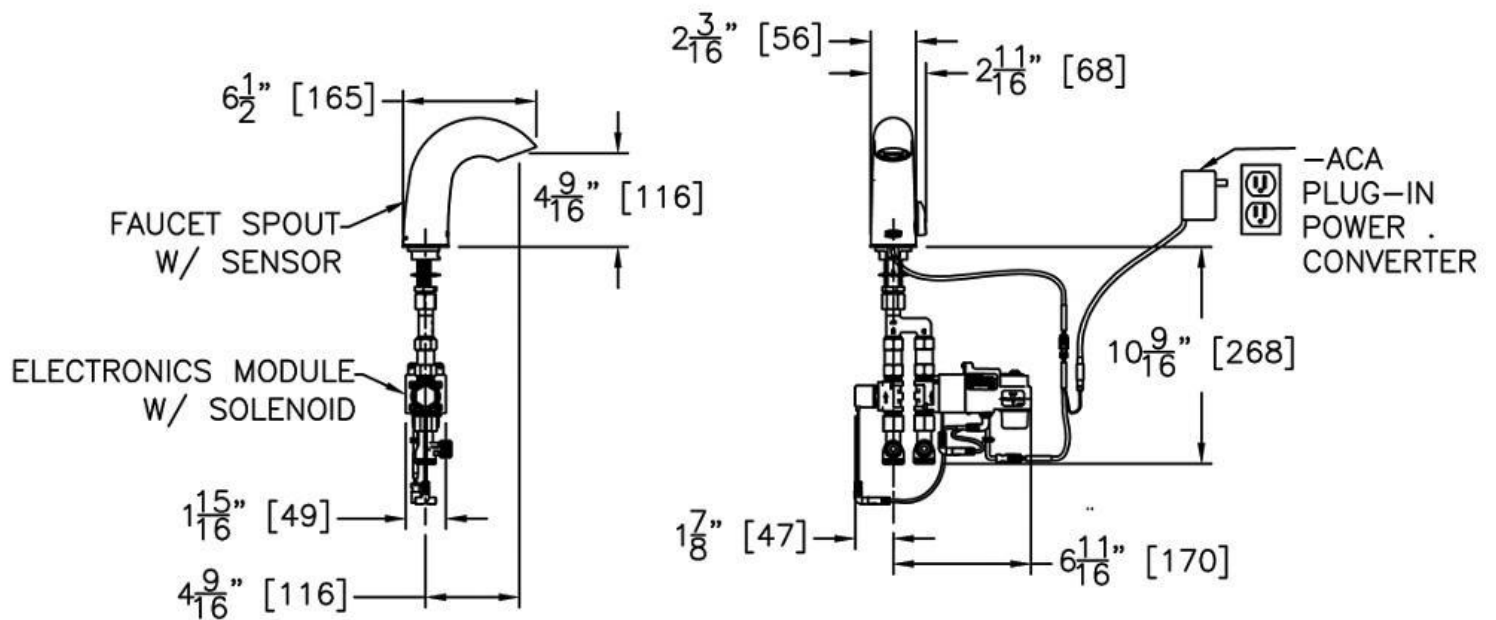


Design and dimensional data (inches and [mm]) are subject to manufacturing tolerances and change without notice.

⚠ WARNING: Cancer and Reproductive Harm – www.P65warnings.ca.gov

⚠ ADVERTENCIA: Cáncer y daño reproductivo – www.P65warnings.ca.gov

⚠ AVERTISSEMENT: Cancer et effets néfastes sur la reproduction – www.P65warnings.ca.gov



Design and dimensional data (inches and [mm]) are subject to manufacturing tolerances and change without notice.

⚠ WARNING: Cancer and Reproductive Harm – www.P65warnings.ca.gov

⚠ ADVERTENCIA: Cáncer y daño reproductivo – www.P65warnings.ca.gov

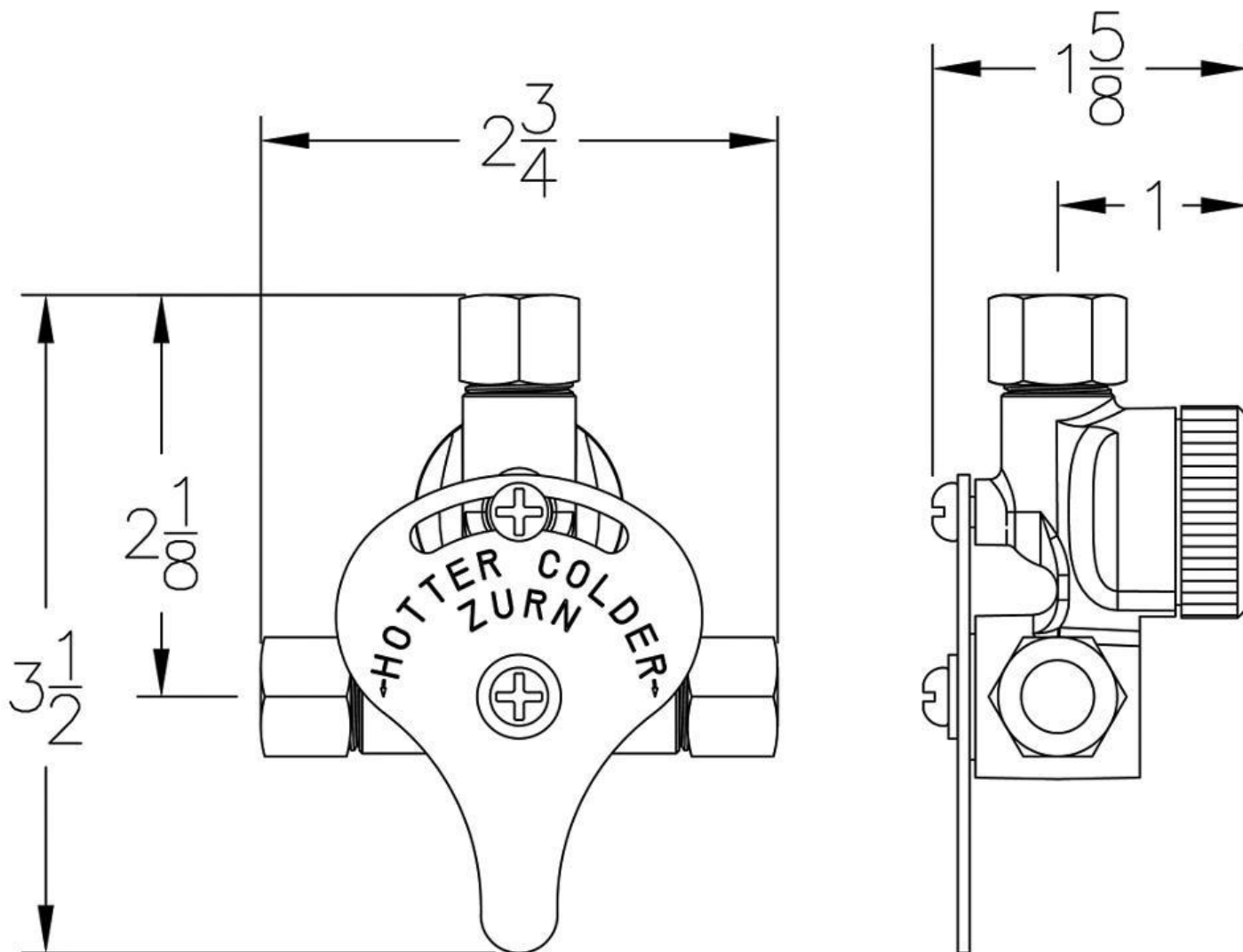
⚠ AVERTISSEMENT: Cancer et effets néfastes sur la reproduction – www.P65warnings.ca.gov



Model(s) Z6950-XL-IM-S

Aqua-FIT® Battery Powered Faucet with Integral Mixer

TAG _____



NOTE: All dimensions are for reference only. Do not use for pre-plumbing.

Design and dimensional data (inches and [mm]) are subject to manufacturing tolerances and change without notice.

⚠ WARNING: Cancer and Reproductive Harm – www.P65warnings.ca.gov
⚠ ADVERTENCIA: Cáncer y daño reproductivo – www.P65warnings.ca.gov
⚠ AVERTISSEMENT: Cancer et effets néfastes sur la reproduction – www.P65warnings.ca.gov