



# Model(s) Z6150

Aquaflush® Concealed Flush Valve for Flushing Rim Floor Drain

TAG \_\_\_\_\_

### Architectural/Engineering Specification:

Concealed, quiet diaphragm-type rough brass flushometer valve with a chloramine resistant, dual seal diaphragm with a clog resistant by-pass. Complete with a non-hold open and no leak push button feature, high back pressure vacuum breaker, one piece hex coupling nut and adjustable tailpiece. Control stop has internal siphon-guard protection. Internal seals are made of chloramine resistant materials.



### FLOW OPTIONS:

|                          |           | Flush Volume | *WaterSense Labeled |
|--------------------------|-----------|--------------|---------------------|
| <input type="checkbox"/> | -ONE      | 1.1 gpf      | x                   |
| <input type="checkbox"/> | -HET      | 1.28 gpf     | x                   |
| <input type="checkbox"/> | -WS1      | 1.6 gpf      |                     |
| <input type="checkbox"/> | -Standard | 3.5 gpf      |                     |
| <input type="checkbox"/> | -FF       | 4.5 gpf      |                     |

### SUFFIX OPTIONS:

|                          |     |                             |
|--------------------------|-----|-----------------------------|
| <input type="checkbox"/> | -BG | BioCare ADA Handle          |
| <input type="checkbox"/> | -L3 | 3" [76mm] Metal Push Button |
| <input type="checkbox"/> | -YB | Sweat Solder Kit            |

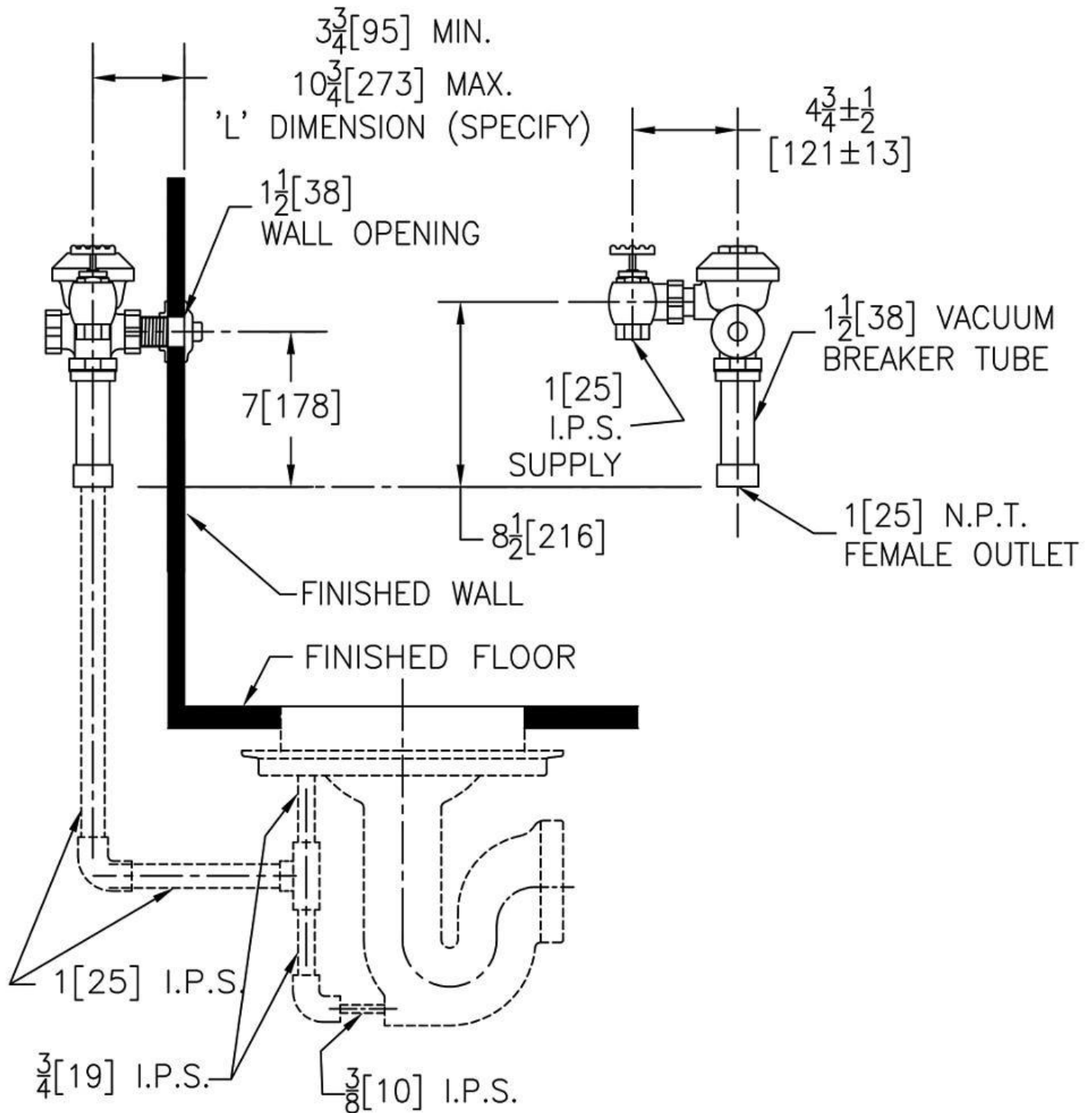
*\*Although products with certain combinations of options and features will meet or comply with these standards and/or certifications, not every combination of options and features will result in such compliance. If you have any questions about your particular product, please contact our Customer Care Dept. at 1-855-ONE-ZURN (United States) or 1-877-892-5216 (Canada) for confirmation.*

[Installation Guide - FV251.pdf](#)

Architectural/Engineering Approval

Design and dimensional data (inches and [mm]) are subject to manufacturing tolerances and change without notice.

⚠ WARNING: Cancer and Reproductive Harm – [www.P65warnings.ca.gov](http://www.P65warnings.ca.gov)  
⚠ ADVERTENCIA: Cáncer y daño reproductivo – [www.P65warnings.ca.gov](http://www.P65warnings.ca.gov)  
⚠ AVERTISSEMENT: Cancer et effets néfastes sur la reproduction – [www.P65warnings.ca.gov](http://www.P65warnings.ca.gov)



NOTE: All dimensions are for reference only. Do not use for pre-plumbing.

Design and dimensional data (inches and [mm]) are subject to manufacturing tolerances and change without notice.

⚠ WARNING: Cancer and Reproductive Harm – [www.P65warnings.ca.gov](http://www.P65warnings.ca.gov)  
 ⚠ ADVERTENCIA: Cáncer y daño reproductivo – [www.P65warnings.ca.gov](http://www.P65warnings.ca.gov)  
 ⚠ AVERTISSEMENT: Cancer et effets néfastes sur la reproduction – [www.P65warnings.ca.gov](http://www.P65warnings.ca.gov)