



Model(s) Z5850

Floor Sink

TAG

Architectural/Engineering Specification:

28" x 28" enameled cast iron corner floor sink. Provided with grid drain (specify outlet size).

PRODUCT FEATURES:

- 28" [711 mm] x 28" [711 mm]
- Enameled cast iron
- Corner floor service sink
- 8" high front curb
- Large, flat bottom with fluted channels for fast drainage
- Integral tiling bead
- Shipping Weight: 210 lbs.

RECOMMENDED TRIM:

<input type="checkbox"/>	Z8743-PC	Grid Strainer
<input type="checkbox"/>	Z8700 Series	P-Trap
<input type="checkbox"/>	Z8800 Series	Top with Flexible Supplies
<input type="checkbox"/>	Z8946-1-NT	ADA Trap, Stop, and Supply Protectors

OPTIONAL TRIM:

<input type="checkbox"/>	Z8746-PC	ADA Grid Strainer
<input type="checkbox"/>	Z8946-3-NT	ADA Trap, Stop, and Supply Protectors for Offset Grid Strainer



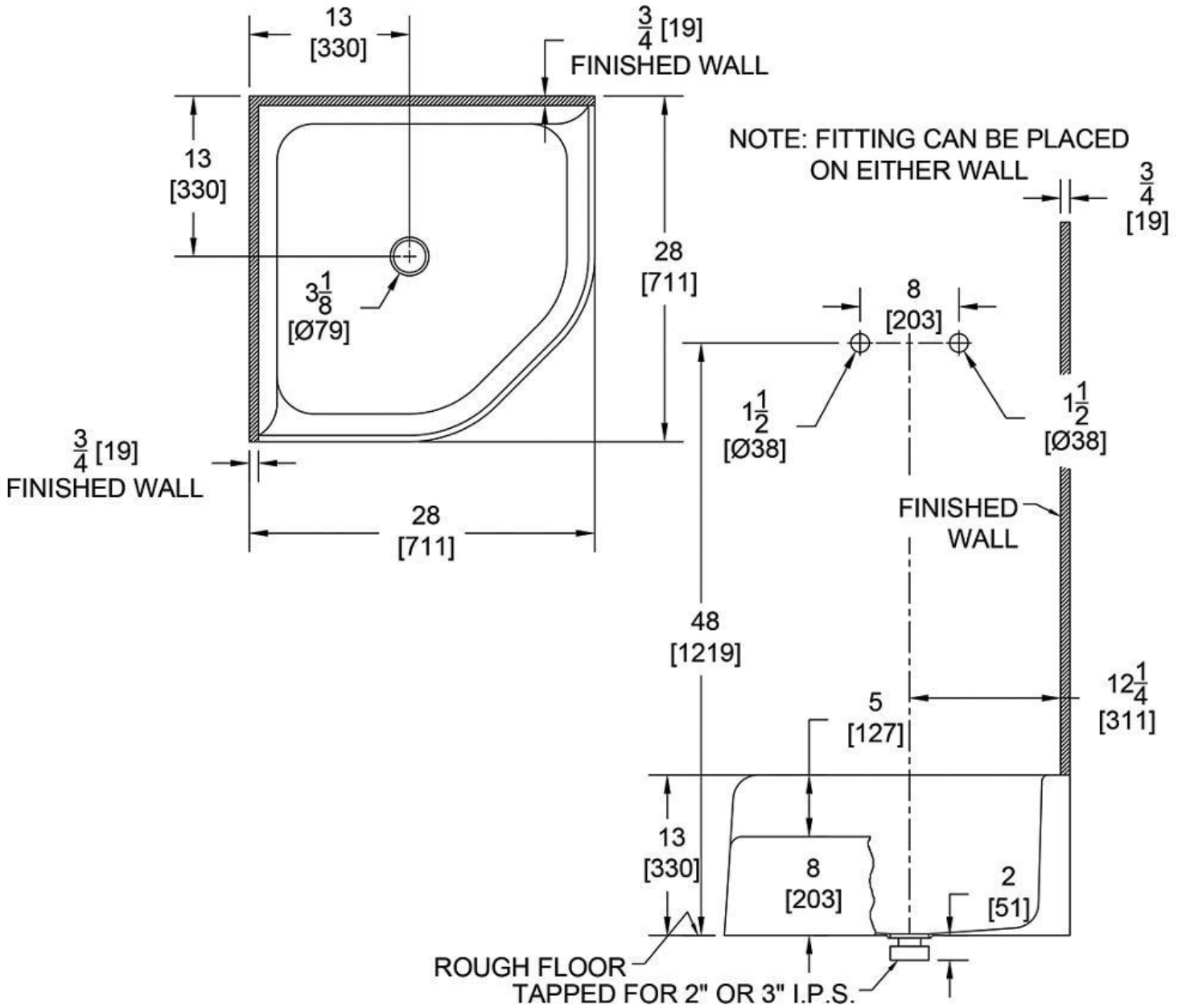
Product Compliance: ASME A112.19.1/CSA B45.2
CSA B45.2
IPC

**Although products with certain combinations of options and features will meet or comply with these standards and/or certifications, not every combination of options and features will result in such compliance. If you have any questions about your particular product, please contact our Customer Care Dept. at 1-855-ONE-ZURN (United States) or 1-877-892-5216 (Canada) for confirmation.*

Architectural/Engineering Approval

Design and dimensional data (inches and [mm]) are subject to manufacturing tolerances and change without notice.

⚠ WARNING: Cancer and Reproductive Harm – www.P65warnings.ca.gov
 ⚠ ADVERTENCIA: Cáncer y daño reproductivo – www.P65warnings.ca.gov
 ⚠ AVERTISSEMENT: Cancer et effets néfastes sur la reproduction – www.P65warnings.ca.gov



NOTE: All dimensions are for reference only. Do not use for pre-plumbing.