



## Model(s) Z5645-BWL

ADA Floor-mounted Back outlet Flush Valve Toilet

TAG \_\_\_\_\_

### Architectural/Engineering Specification:

Vitreous China, 1.28 gpf [4.8 Lpf] or greater, high efficiency, floor mounted back outlet toilet with siphon jet flushing action, ZurnSHIELD™ ceramic glaze, elongated front rim, ADA compliant rim height, 1-1/2" top spud inlet connection and 4-1/8" back outlet rough-in height. This bowl is designed to perform to industry standards with as little as 1.28 gallons per flush, engineered to provide optimal performance.

### PRODUCT FEATURES:

- Zurn High Efficiency Toilets and paired performance flush valve systems are designed to exceed industry standards while using as little as 1.28 gallons of water per flush.
- Universal high efficiency toilet can be specified with 1.28 gpf [4.8 lpf], 1.6 gpf [6.0 lpf] or dual flush valves.
- Vitreous china
- ZurnSHIELD™ ceramic glaze creates a permanent surface that protects the fixture by inhibiting the growth of stain and odor causing mold mildew and bacteria, thus reducing the amount of time, chemicals and water to clean the bowl.
- 4-1/8" Back Outlet Rough-in
- Elongated front rim
- ADA Compliant rim height
- 2-1/8" fully glazed trapway
- High efficiency siphon jet flush action
- Includes bolt caps
- Shipping Weight: 65 lbs.

### VARIANT OPTIONS:

Z5645-BWL	Top spud toilet
Z5646-BWL	Top spud toilet with integral bedpan lugs

### Recommended Trim:

Z5955SS-EL	Elongated, standard white, open front toilet seat less cover with stainless steel check hinge
------------	---



### Product Compliance:

ADA  
ASME A112.19.2/CSA B45.1  
CEC  
CSA B45.1  
IPC

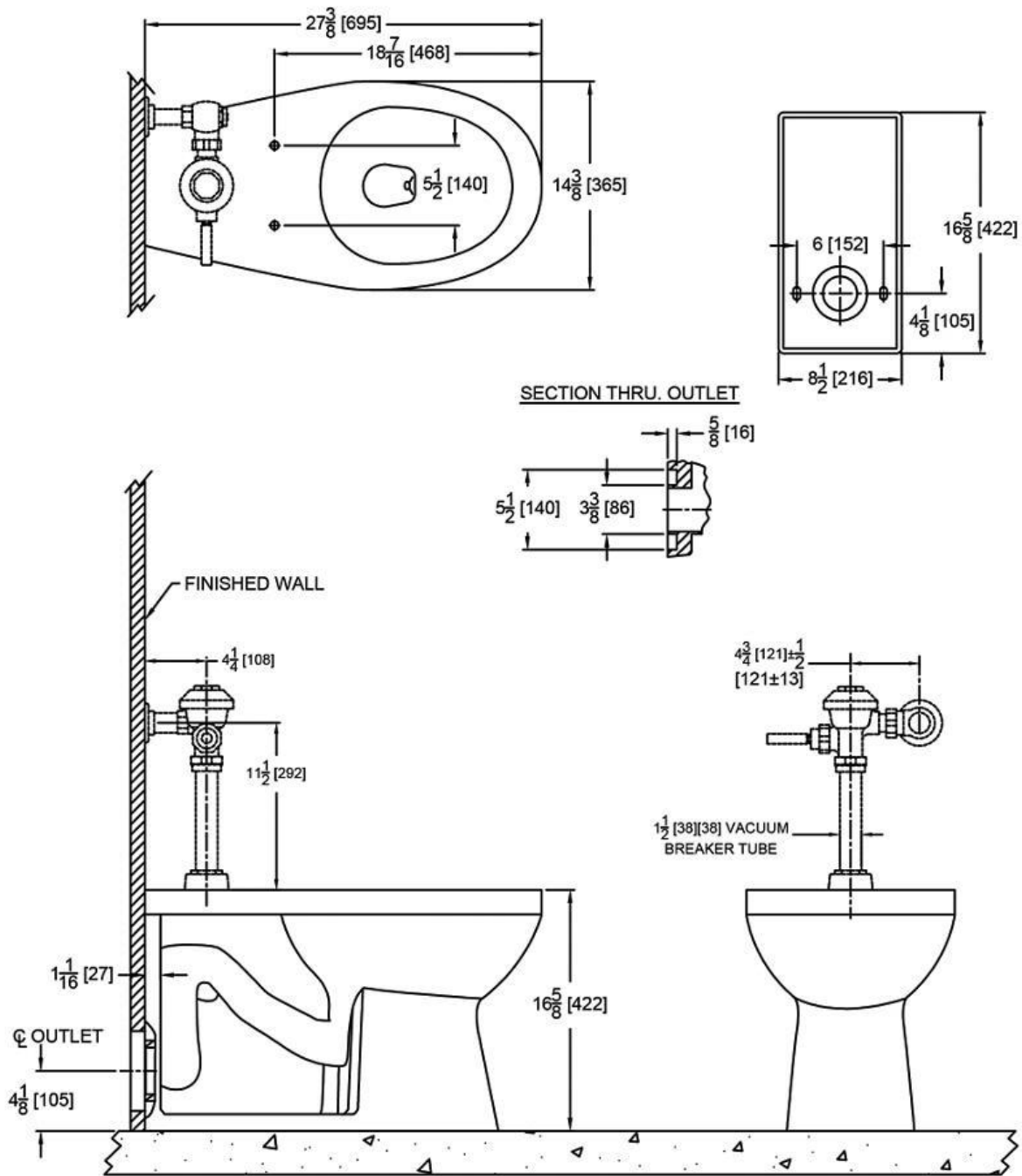
\*Complies with ADA & ICC A117.1 accessibility requirements when installed according to the requirements outlined in these standards.

*\*Although products with certain combinations of options and features will meet or comply with these standards and/or certifications, not every combination of options and features will result in such compliance. If you have any questions about your particular product, please contact our Customer Care Dept. at 1-855-ONE-ZURN (United States) or 1-877-892-5216 (Canada) for confirmation.*

Architectural/Engineering Approval

Design and dimensional data (inches and [mm]) are subject to manufacturing tolerances and change without notice.

⚠ WARNING: Cancer and Reproductive Harm – [www.P65warnings.ca.gov](http://www.P65warnings.ca.gov)  
⚠ ADVERTENCIA: Cáncer y daño reproductivo – [www.P65warnings.ca.gov](http://www.P65warnings.ca.gov)  
⚠ AVERTISSEMENT: Cancer et effets néfastes sur la reproduction – [www.P65warnings.ca.gov](http://www.P65warnings.ca.gov)



NOTE: All dimensions are for reference only. Do not use for pre-plumbing.

Design and dimensional data (inches and [mm]) are subject to manufacturing tolerances and change without notice.

⚠ WARNING: Cancer and Reproductive Harm – [www.P65warnings.ca.gov](http://www.P65warnings.ca.gov)  
 ⚠ ADVERTENCIA: Cáncer y daño reproductivo – [www.P65warnings.ca.gov](http://www.P65warnings.ca.gov)  
 ⚠ AVERTISSEMENT: Cancer et effets néfastes sur la reproduction – [www.P65warnings.ca.gov](http://www.P65warnings.ca.gov)