



Model(s) Z5617-BWL

Back Spud Wall Hung Flush Valve Toilet with ZurnSHIELD™ glaze

TAG

Architectural/Engineering Specification:

Vitreous China, 1.1 gpf [4.2 Lpf] or greater high efficiency wall hung toilet with siphon jet flushing action, ZurnSHIELD™ Glaze and elongated front rim with 1-1/2" back spud connection. Universal high efficiency toilet is designed to exceed industry standards with flush volumes of 1.1 gallons per flush or higher.

PRODUCT FEATURES:

- Zurn High Efficiency Toilets and paired performance flush valve systems are designed to exceed industry standards, while using as little as 1.1 gallons of water per flush
- Vitreous china
- ZurnSHIELD™ ceramic glaze creates a permanent surface that protects the fixture by inhibiting the growth of stain and odor causing mold, mildew, and bacteria, thus reducing the amount of time, chemicals and water to clean the bowl
- Backspud/Concealed flush valve system
- Elongated front rim
- 2-1/8" [54mm] fully glazed trapway
- High efficiency siphon jet flush action
- Shipping Weight: 50 lbs

Recommended Trim:

Z5955SS-EL	Elongated, standard white, open front toilet seat less cover with stainless steel check hinge
------------	---



Product Compliance:

ADA
ASME A112.19.2/CSA B45.1
CEC
CSA B45.1
IPC
WaterSense

*Complies with ADA & ICC A117.1 accessibility requirements when installed according to the requirements outlined in these standards.



*This product should be used with a WaterSense labeled counterpart with a compatible flow volume to ensure that the entire system meets the requirements for water efficiency and performance.

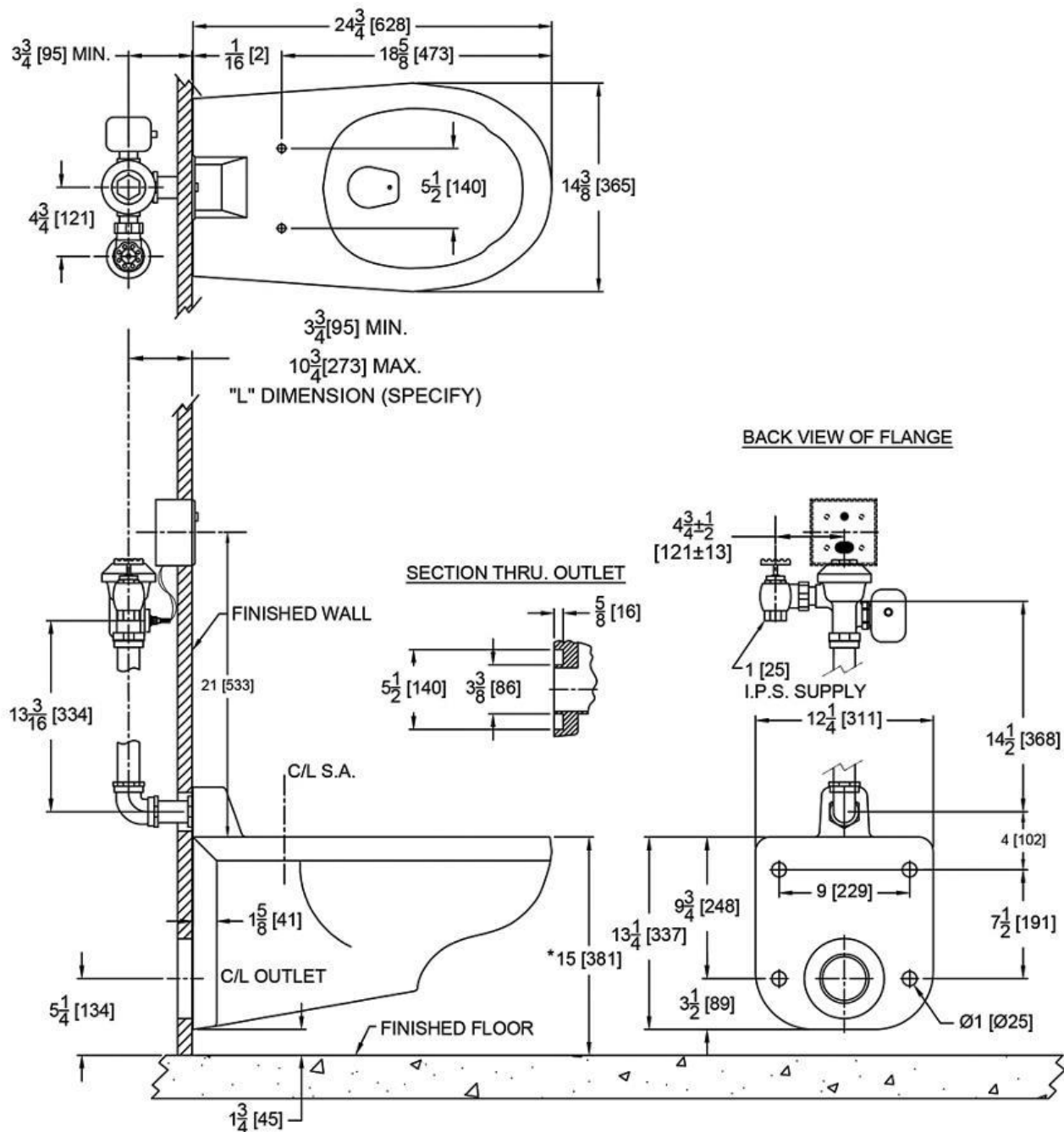
**Although products with certain combinations of options and features will meet or comply with these standards and/or certifications, not every combination of options and features will result in such compliance. If you have any questions about your particular product, please contact our Customer Care Dept. at 1-855-ONE-ZURN (United States) or 1-877-892-5216 (Canada) for confirmation.*

[Installation Guide - fv868.pdf](#)

Architectural/Engineering Approval

Design and dimensional data (inches and [mm]) are subject to manufacturing tolerances and change without notice.

⚠ WARNING: Cancer and Reproductive Harm – www.P65warnings.ca.gov
⚠ ADVERTENCIA: Cáncer y daño reproductivo – www.P65warnings.ca.gov
⚠ AVERTISSEMENT: Cancer et effets néfastes sur la reproduction – www.P65warnings.ca.gov



*NOTE: For ADA compliance, top of seat height should be installed at 17" [431mm] - 19" [482mm] from finished floor.

NOTE: All dimensions are for reference only. Do not use for pre-plumbing.

Design and dimensional data (inches and [mm]) are subject to manufacturing tolerances and change without notice.

⚠️ WARNING: Cancer and Reproductive Harm – www.P65warnings.ca.gov
⚠️ ADVERTENCIA: Cáncer y daño reproductivo – www.P65warnings.ca.gov
⚠️ AVERTISSEMENT: Cancer et effets néfastes sur la reproduction – www.P65warnings.ca.gov