



Z1240-EZR

Exposed Arm Carrier System for Sundara® Lavatory w/
Adjustable Uprights & Header Plates

TAG _____

Product Specification

The Sundara lavatory carrier is designed to reduce and simplify the Sundara Handwashing System installation while providing unmatched strength and stability. Zurn's Z1240-EZR carriers are engineered specifically for the Sundara basins to deliver a complete and unparalleled solution.

Carrier Features

- Engineered to reduce installation and rework time
- Pairs with Sundara engineered solid surface lavatory
- 300 lbs [136 kg] load capacity
- Exposed Arm Carrier System
- Adjustable Header Plates
- OSHPOD Compliant foot design
- Rulers mounted to uprights for easily determining spacings
- Carrier Arms supplied with lavatory

Standard Compliance

- ASME A112.6.1M

Materials

- ASTM A500 Grade C Steel Uprights
- ASTM A48 Class 25 Header
- Steel Hardware
- ASTM A36 Steel Plates

Options:

- | | |
|-----|---|
| -CU | Floor-to-Ceiling Upright
(Specify Height Required) |
| -SL | Stud Length over 6 [152] |
| -WL | Waste Line Sleeve |
| -WS | Wall Support Valve Plate
(Specify Valve Name and Number Tag) |

Architectural/Engineering Approval

The information contained in this document is subject to change without notice.
Please contact Zurn for most up to date information.



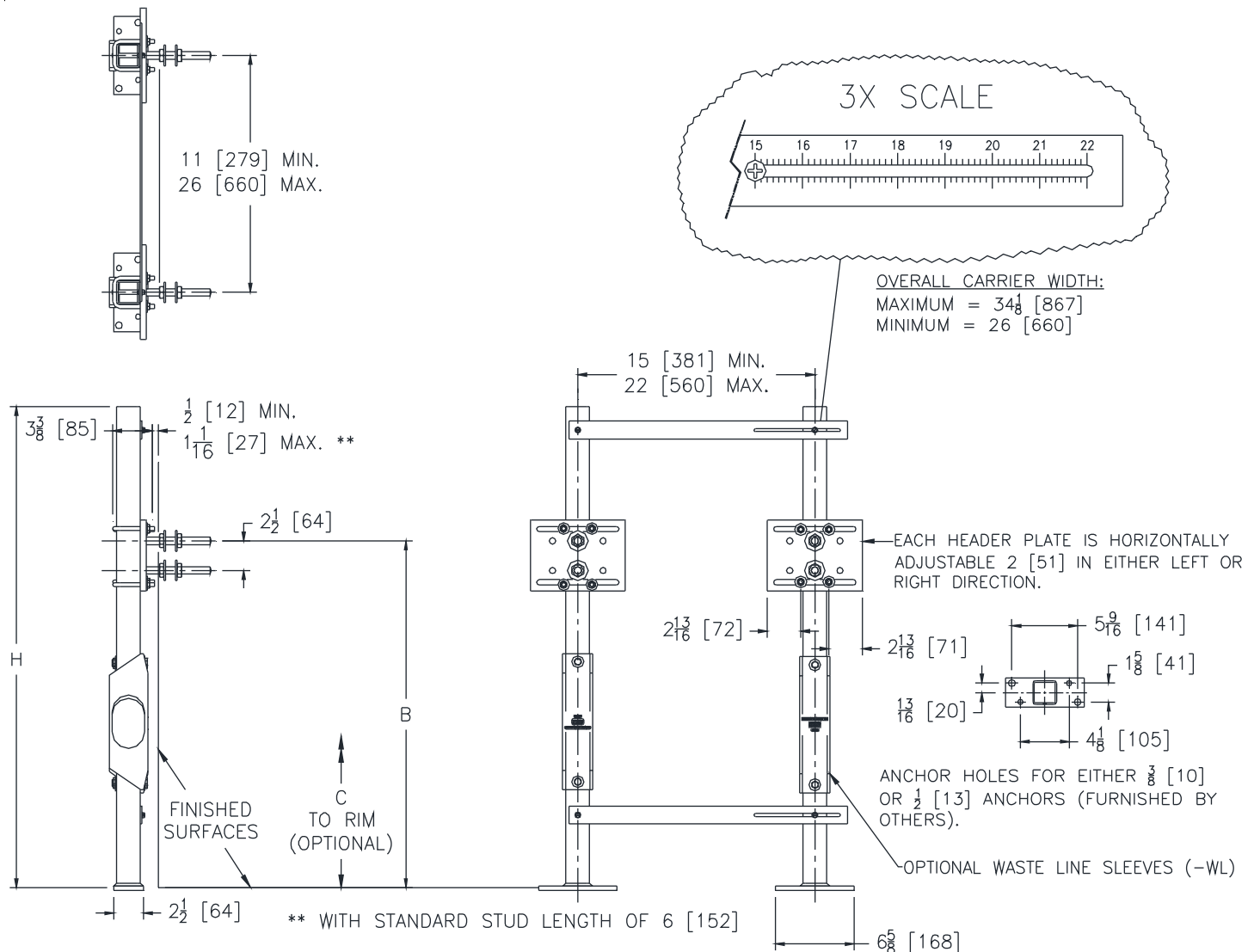
Shown with -WL Option



Z1240-EZR

Exposed Arm Carrier System for Sundara® Lavatory w/
Adjustable Uprights & Header Plates

TAG _____



Engineering Specification: ZURN Z1240-EZR

Wall Hung Lavatory Support System complete with Dura-Coated upright supports made from structural carbon-steel square tubing, conforming to ASTM A500 Grade C standards, with welded steel plate mounting feet featuring separate bolt patterns for using either 3/8" [10mm] or 1/2" [13mm] anchors, both meeting OSHPD spacing requirements. Includes lower and upper EZ-installation plates marked with an indexed ruler guide for accurate adjustability of upright spacing, from 15" [381mm] to 22" [560mm]. Individual slotted header plates provide 2" [51mm] of additional horizontal adjustment per plate allowing for a total horizontal adjustment range of 11" [279mm] to 26" [660mm]. Uprights, EZ-installation plates, and header plates are all factory assembled for easy installation. Carrier system exceeds load and deflection requirements when tested in accordance to ASME Standard A112.6.1M to any adjustment position.

Dimensional Data (inches and [mm]) are Subject to
Manufacturing Tolerances and Change Without Notice

* Regularly furnished unless otherwise specified.