

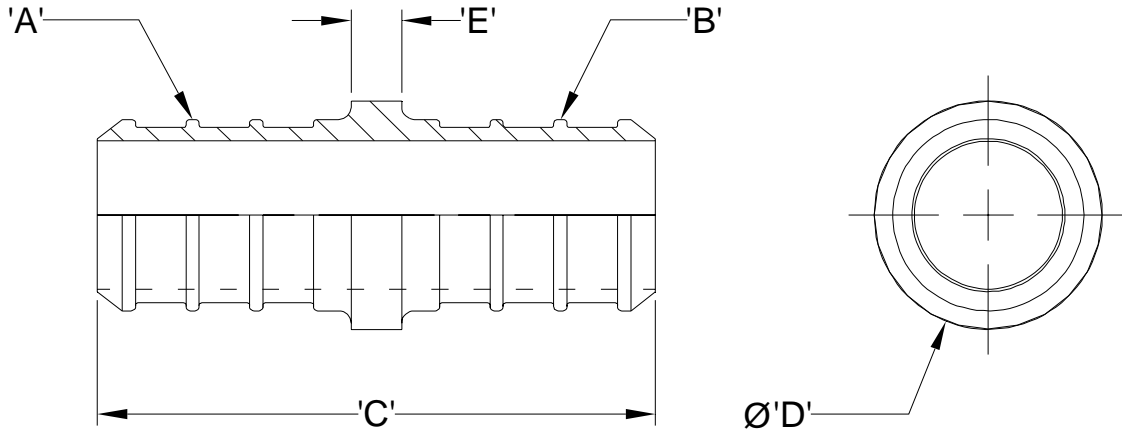


Zurn PEX® XL-Low Lead Brass UL 1821 Listed Barb Coupling - QQC55GFX Specification Sheet

Tag _____

Dimensional Data: Inches and [mm] are subject to manufacturing tolerances and change without notice.

Note: Barb geometry will vary depending upon barb size.



| Part Number | Description | 'A' | 'B' | 'C' | 'D' | 'E' |
|-------------|----------------------------|---------|---------|--------------|--------------|-------------|
| QQC55GFX | 1" Barb x 1" Barb Coupling | 1" Barb | 1" Barb | 1.72" [43.6] | 1.00" [25.4] | .013" [3.2] |

Engineering Specification: Zurn PEX® XL-Low Lead Brass Barb Coupling. The QQC55GFX is used to connect two separate pieces of PEX tubing. Manufactured from EcoBrass®. These fittings, as a system with Zurn PEX® tube, are pressure rated at 160 PSI at 73°F, 130 PSI at 120°F (fire protection rating), 100 PSI at 180°F, and 80 PSI at 200°F. These fittings are listed by NSF as complying with the following standards: NSF/ANSI Standard 14, NSF/ANSI Standard 61 including Annex G, ASTM F877, CSA B137.5, ASTM F1807, and UL 1821.

Accessories

- **QCLP5X** 1" QuickClamp® Crimp Ring
- **QCR5X** 1" Copper Crimp Ring

| | | |
|-----------------|--------------------|----------------|
| Rev. | Date: 10/8/10 | C.N. No.111814 |
| Dwg. No. 302755 | Prod. No. QQC55GFX | |