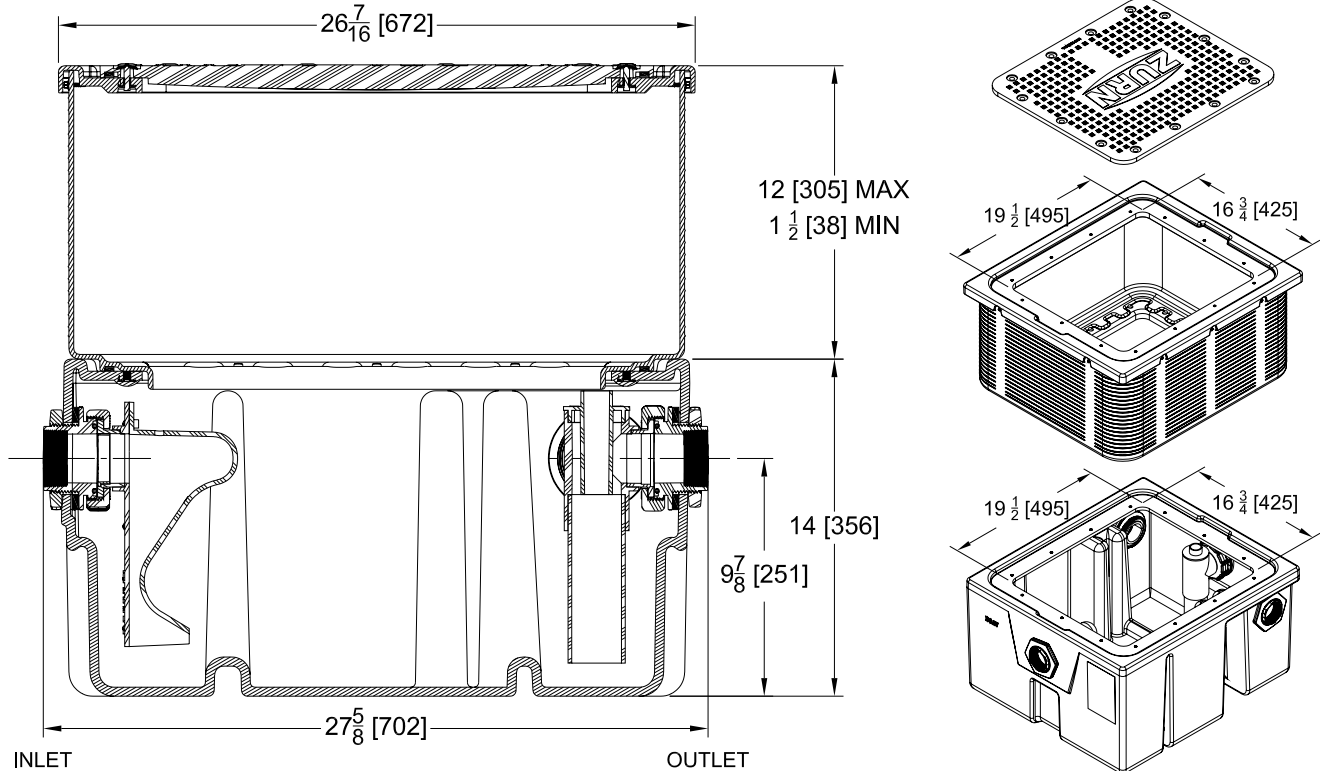




**GRZE™-25-ADJ-EXT**  
 25 GPM PLASTIC GREASE INTERCEPTOR WITH  
 ADJUSTABLE EXTENSION

Design and Dimensional Data (inches and [ mm ]) are Subject to Manufacturing Tolerances and Change Without Notice

UNIT SIZE	Flow Rate [GPM/LPM]	Flow Control	Max Grease Capacity [lbs/kg]	Efficiency [%]	Liquid Capacity [Gal, L]	Solids Capacity [gal/L]	Inlet/Outlet Size [in/mm]	Approx Weight [lbs/kg]	Dimensions [in/mm]	Listing/Certification		Type
										IAPMO	PDI	
GRZE 25	25 [96.4]	Internal	96.2 [43.6]	97.3	17.5 [66.2]	2.3 [8.7]	2 [51]	58 [26]	27.6x23x14 [700x584x356]	ASME A112.14.3/CSA B481.1	-	C
		External	101.2 [45.9]	97.9						ASME A112.14.3/CSA B481.1	PDI G101	A



**ENGINEERING SPECIFICATION: ZURN GRZE-25-ADJ-EXT**

ZURN GRZE-25-ADJ-EXT Hydromechanical grease interceptor with adjustable extension is IAPMO listed and complies with ASME A112.14.3/CSA B481.1 as Type C, rated at 25 GPM [96.4 LPM] and 96.2 lbs [43.6 kg] maximum grease capacity. GRZE-25-ADJ-EXT is designed for commercial applications above or below grade or under sink and has a lifetime limited warranty. The interceptor unit shall be molded polyethylene with a maximum operational temperature of 165°F (74°C). Regularly furnished with internal flow control, internal air relief by-pass, fixed solids catching bottom baffles, removable inlet diffuser and outlet piping, optional left, right, or center outlet configurations, 2NPT to 2NH, 3NH, and 4NH adapters, 2NPT threaded outlet plugs. The adjustable extension consists of a molded polypropylene flange, polyethylene riser body and integral gasket that is mechanically affixed to the GRZE interceptor and can be field cut to desired height between 1-1/2 inches [38 mm] minimum to 12 inches [305 mm] maximum. The adjustable extension can be used in combination with the 6 inch [152 mm] static GRZE extension to bring the maximum height to 18 inches [547 mm]. GRZE-25-ADJ-EXT shall have gasketed skid resistant light duty secured cover complete with sealing washers and sidewalk bolts and 300 lbs [136.1 kg] load capacity.

**SUFFIXES**

- \_\_\_\_ -EFC ASME A112.14.3/CSA B481.1 Type A and PDI-G 101 certified grease interceptor with external flow control (See Z1108). Rated at 25 GPM [96.4 LPM] and 101.2 lbs [45.9 kg] maximum grease capacity.
- \_\_\_\_ -EXT 6 [152] Stackable Plastic Extension
- \_\_\_\_ -POP Integral Pump Out Port Kit with 3 [76] connection

- ⚠ **WARNING:** Cancer and Reproductive Harm - [www.P65Warnings.ca.gov](http://www.P65Warnings.ca.gov)
- ⚠ **ADVERTENCIA:** Cáncer y daño reproductivo - [www.P65Warnings.ca.gov](http://www.P65Warnings.ca.gov)
- ⚠ **AVERTISSEMENT:** Cancer et effets néfastes sur la reproduction - [www.P65Warnings.ca.gov](http://www.P65Warnings.ca.gov)



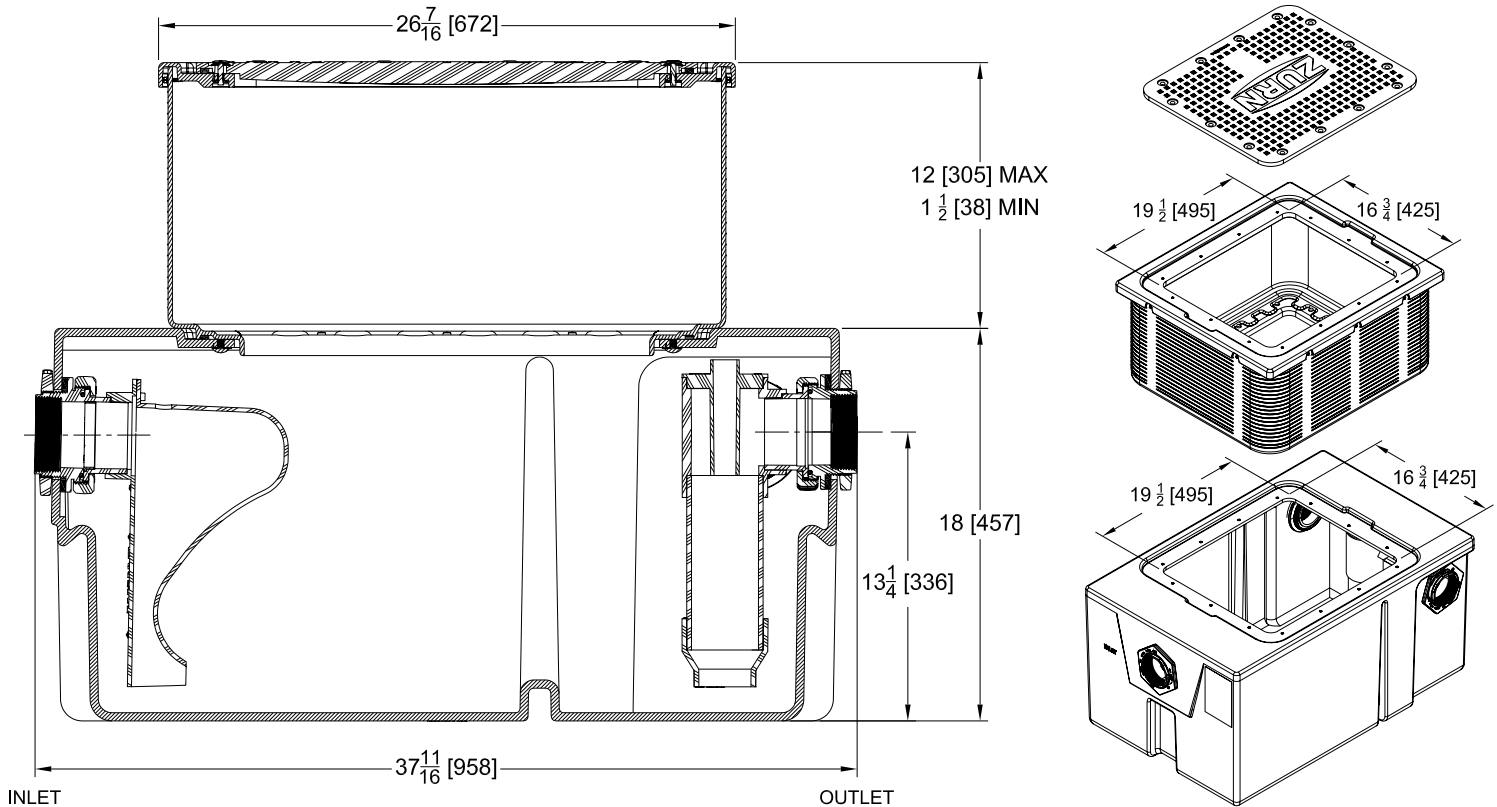
# GRZE™-50-ADJ-EXT

## 50 GPM PLASTIC GREASE INTERCEPTOR WITH ADJUSTABLE EXTENSION

TAG \_\_\_\_\_

Design and Dimensional Data (inches and [ mm ]) are Subject to Manufacturing Tolerances and Change Without Notice

UNIT SIZE	Flow Rate [GPM/LPM]	Flow Control	Max Grease Capacity [lbs/kg]	Efficiency [%]	Liquid Capacity [Gal. L]	Solids Capacity [gal/L]	Inlet/Outlet Size [in/mm]	Approx Weight [lbs/kg]	Dimensions [in/mm]	Listing/Certification		Type
										IAPMO	PDI	
GRZE 50	50 [189.3]	Internal	180 [81.6]	91.3	37.8 [143.1]	4.4 [16.7]	3 [76]	76 [34]	37.6x23x18 [956x584x457]	ASME A112.14.3/CSA B481.1	-	C
		External	227.3 [103.1]	92.4						ASME A112.14.3/CSA B481.1	PDI G101	A



### ENGINEERING SPECIFICATION: ZURN GRZE-50-ADJ-EXT

ZURN GRZE-50-ADJ-EXT Hydromechanical grease interceptor with adjustable extension is IAPMO listed and complies with ASME A112.14.3/CSA B481.1 as Type C, rated at 50 GPM [189.3 LPM] and 180 lbs [81.6 kg] maximum grease capacity. GRZE-50-ADJ-EXT is designed for commercial applications above or below grade or under sink and has a lifetime limited warranty. The interceptor unit shall be molded polyethylene with a maximum operational temperature of 165°F (74°C). Regularly furnished with internal flow control, internal air relief by-pass, fixed solids catching bottom baffles, removable inlet diffuser and outlet piping, optional left, right, or center ports, 3NPT to 2NH, 3NH, and 4NH adapters, 3NPT threaded outlet plugs. The adjustable extension consists of a molded polypropylene flange, polyethylene riser body and integral gasket that is mechanically affixed to the GRZE interceptor and can be field cut to desired height between 1-1/2 inches [38 mm] minimum to 12 inches [305 mm] maximum. The adjustable extension can be used in combination with the 6 inch [152 mm] static GRZE extension to bring the maximum height to 18 inches [547 mm]. GRZE-50-ADJ-EXT shall have gasketed skid resistant light duty secured cover complete with sealing washers and sidewalk bolts and 300 lbs [136.1 kg] load capacity.

### SUFFIXES

- \_\_\_\_\_-EFC ASME A112.14.3/CSA B481.1 Type A and PDI-G 101 certified grease interceptor with external flow control (See Z1108). Rated at 50 GPM [189.3 LPM] and 227.3 lbs. [103.1 kg] maximum grease capacity.
- \_\_\_\_\_-EXT 6 [152] Stackable Plastic Extension
- \_\_\_\_\_-POP Integral Pump Out Port Kit with 3 [76] connection

- ⚠ **WARNING:** Cancer and Reproductive Harm - [www.P65Warnings.ca.gov](http://www.P65Warnings.ca.gov)
- ⚠ **ADVERTENCIA:** Cáncer y daño reproductivo - [www.P65Warnings.ca.gov](http://www.P65Warnings.ca.gov)
- ⚠ **AVERTISSEMENT:** Cancer et effets néfastes sur la reproduction - [www.P65Warnings.ca.gov](http://www.P65Warnings.ca.gov)

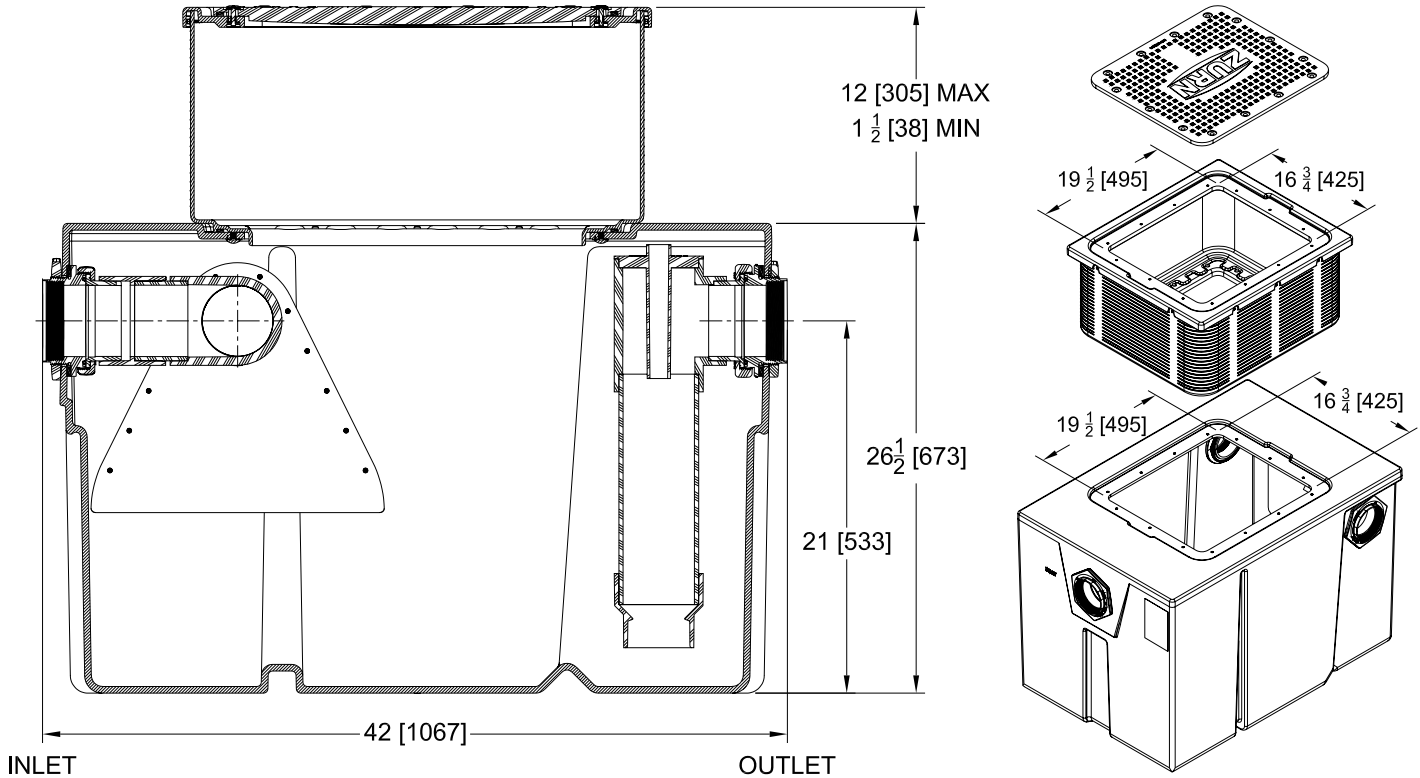


# GRZE™-75-ADJ-EXT

## 75 GPM PLASTIC GREASE INTERCEPTOR WITH ADJUSTABLE STACKABLE STATIC EXTENSION

Design and Dimensional Data (inches and [ mm ]) are Subject to Manufacturing Tolerances and Change Without Notice

UNIT SIZE	Flow Rate [GPM/LPM]	Flow Control	Max Grease Capacity [lbs/kg]	Efficiency [%]	Liquid Capacity [Gal, L]	Solids Capacity [gal/L]	Inlet/Outlet Size [in/mm]	Approx Weight [lbs/kg]	Dimensions [in/mm]	Listing/Certification		Type
										IAPMO	PDI	
GRZE 75	75 [283.9]	Internal	341.6 [154.9]	94.2	77.1 [291.9]	4.8 [30.3]	4 [102]	99 [45]	41.6x27x26.5 [1056x686x673]	ASME A112.14.3/CSA B481.1	-	C
		External	464.3 [210.6]	96.8						ASME A112.14.3/CSA B481.1	PDI G101	A



### ENGINEERING SPECIFICATION: ZURN GRZE-75-ADJ-EXT

ZURN GRZE-75-ADJ-EXT Hydromechanical grease interceptor with adjustable extension is IAPMO listed and complies with ASME A112.14.3/CSA B481.1 as Type C, rated at 75 GPM [283.9 LPM] and 341.6 lbs [154.9 kg] maximum grease capacity. GRZE-75-ADJ-EXT is designed for commercial applications above or below grade or under sink and has a lifetime limited warranty. The interceptor unit shall be molded polyethylene with a maximum operational temperature of 165°F (74°C). Regularly furnished with internal flow control, internal air relief by-pass, fixed solids catching bottom baffles, removable inlet diffuser and outlet piping, optional left, right, or center ports, 4NPT to 2NH, 3NH, and 4NH adapters, 4NPT threaded outlet plugs. The adjustable extension consists of a molded polypropylene flange, polyethylene riser body and integral gasket that is mechanically affixed to the GRZE interceptor and can be field cut to desired height between 1-1/2 inches [38 mm] minimum to 12 inches [305 mm] maximum. The adjustable extension can be used in combination with the 6 inch [152 mm] static GRZE extension to bring the maximum height to 18 inches [547 mm]. GRZE-75-ADJ-EXT Unit shall have gasketed skid resistant light duty secured cover complete with sealing washers and sidewalk bolts and 300 lbs [136.1 kg] load capacity.

### SUFFIXES

- \_\_\_\_ -EFC ASME A112.14.3/CSA B481.1 Type A and PDI-G 101 certified grease interceptor with external flow control (See Z1108). Rated at 75 GPM [283.9 LPM] and 464.3 lbs [210.6 kg]. maximum grease capacity.
- \_\_\_\_ -EXT 6 [152] Stackable Plastic Extension
- \_\_\_\_ -POP Integral Pump Out Port Kit with 3 [76] connection

- ⚠ **WARNING:** Cancer and Reproductive Harm - [www.P65Warnings.ca.gov](http://www.P65Warnings.ca.gov)
- ⚠ **ADVERTENCIA:** Cáncer y daño reproductivo - [www.P65Warnings.ca.gov](http://www.P65Warnings.ca.gov)
- ⚠ **AVERTISSEMENT:** Cancer et effets néfastes sur la reproduction - [www.P65Warnings.ca.gov](http://www.P65Warnings.ca.gov)